

## MERIDIAN CLASS



This state-of-the-art Service Operation Vessel is designed to provide a low-cost, high-performance solution to growing demands for construction and commissioning support as well as long-term windfarm maintenance

Hull design with its novel propulsion layout offers increased operability. Together with capable Dynamic Positioning System vessel provides the highest level of station-keeping required for complex operations in challenging environments.

This battery hybrid vessel can be equipped with up to 2.5 MW of battery power and IMO Tier III Methanol powered engines, making it compliant with the strictest emission regulations.

The vessel features comfortable accommodation for up to 120 personnel, dedicated client offices, and outstanding recreational facilities, allowing for sustained campaign support for construction and technical service teams and enhancing the ability to attract and retain highly qualified personnel.

Key operational assets include:

- Active Motion Compensated gangway
- 3D Compensated knuckle boom crane
- Dedicated Daughter Craft for access to wind farm assets
- Helideck



## GENERAL SPECIFICATIONS

Type	Offshore Service Vessel
Class	DNV
Length overall	89,90 m
Width	20,00 m
Depth to main deck	7.6 m
Design draft	5.4 m
Service speed	12.5 knots
Positioning system	DP2
Propulsion thrusters	4 x 1,700 kW
Main generator sets	3 x 1,700 kW
BESS	2 x 1250 kWh
Auxiliary generator set	1 x 300 kW
Fuel	Methanol Ready
Deck cargo area	~400 m <sup>2</sup>
Deck load	5 t/m <sup>2</sup>
Deck cargo	~200 t
Internal warehouse	~500 m <sup>2</sup>
IMDG Store	Temp and humidity controlled
POB	120 in single and double cabins
Crew	Up to 25
Industrial personnel	Up to 95
Comfort class	DNV Comfort Class 2
Endurance	30 days

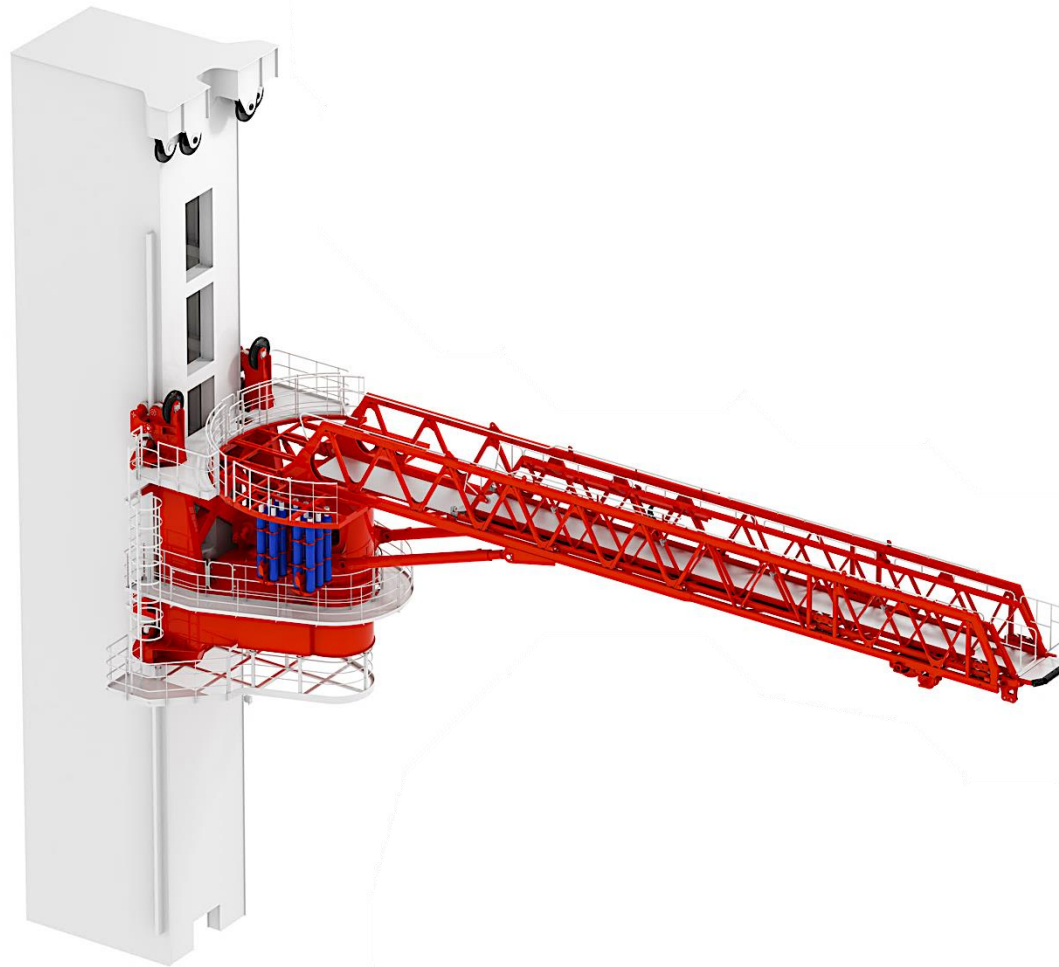


## KEY MISSION EQUIPMENT

Motion Compensated Gangway	3D MCG 31m
Motion Compensated Crane	3-5t 3D motion compensated - 15t in harbour
Helideck (optional)	D 18m / T 8.6t
Boat landing	Height adjustable
Daughter craft (optional)	12 PAX + 1t cargo



## Active Motion Compensated Gangway



**Minimum boom length**

21 m

**Maximum boom length**

31 m

Telescoping stroke of outer section

10 meter  $\pm$  5 m

**Bridge width (inside inner section)**

Minimum 1.2 m

**Vertical travel**

10-15 m

Max. bridge luffing stroke

+/- 20 degrees

**General workability**

Wave Hs=3.5 m

Wind 25 m/s

Load handling hoist – full 3D mode

2,000 kg

Tower elevator capacity

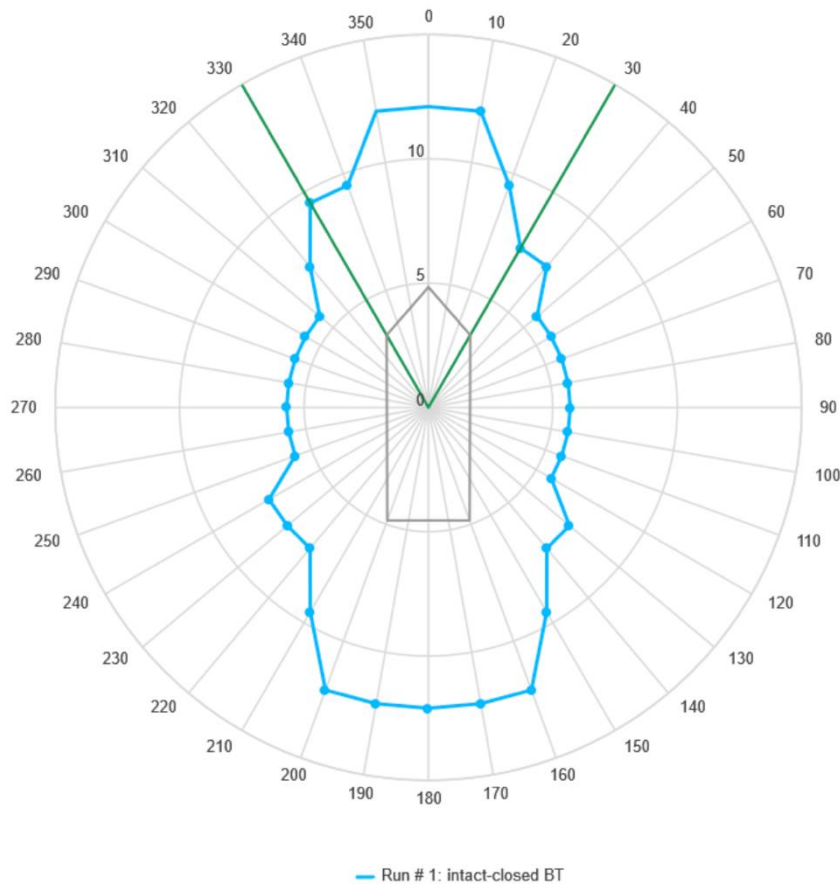
2,000 kg



## Position keeping

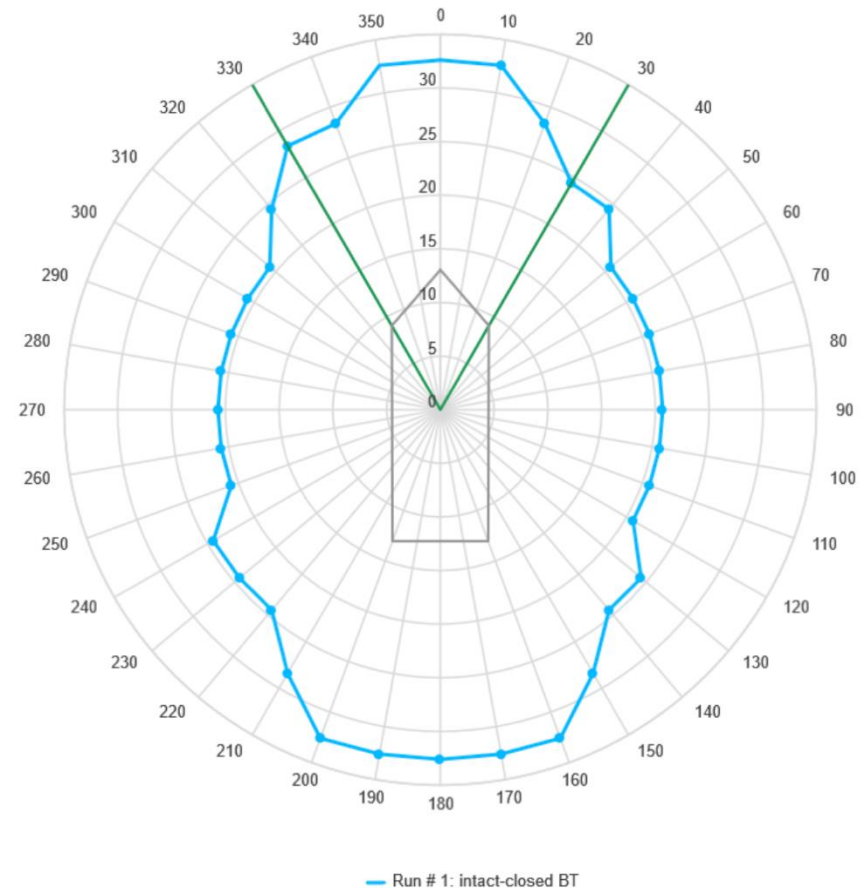
The vessel is provided with a DP2 L2 (9,8,9,7) system with target-less Laser PRU and 2 x DGPS.

### Limiting Hs in m



### Limiting wind speed in m/s

For L1 and L2 analyses the values are converted from the Beaufort scale



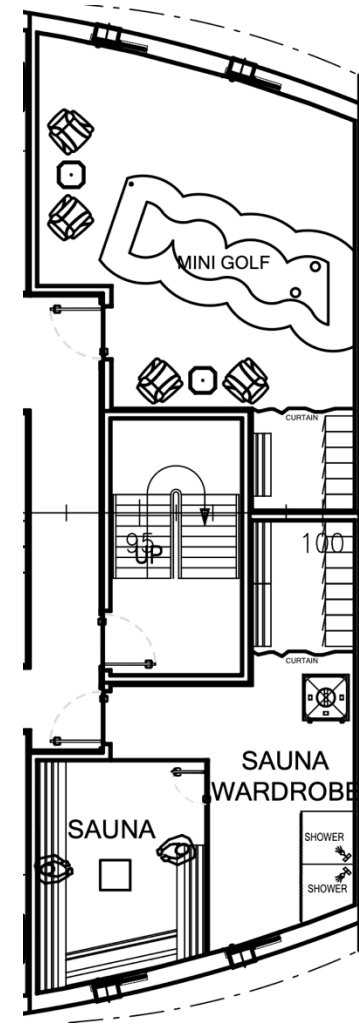
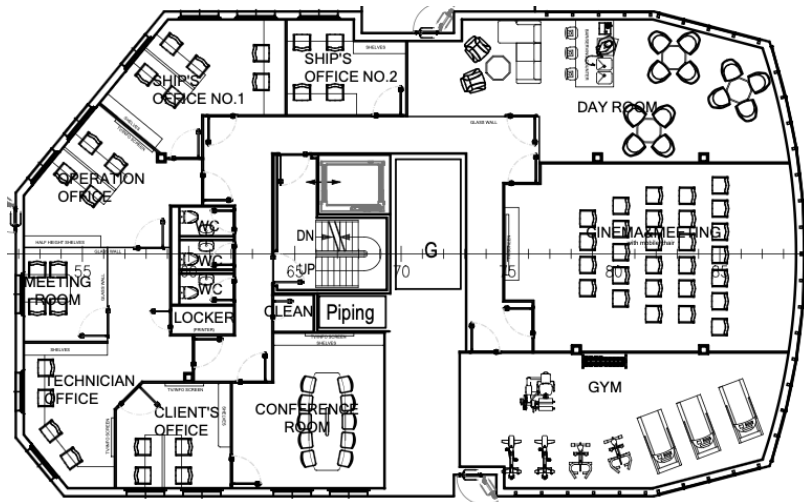
## Accommodation

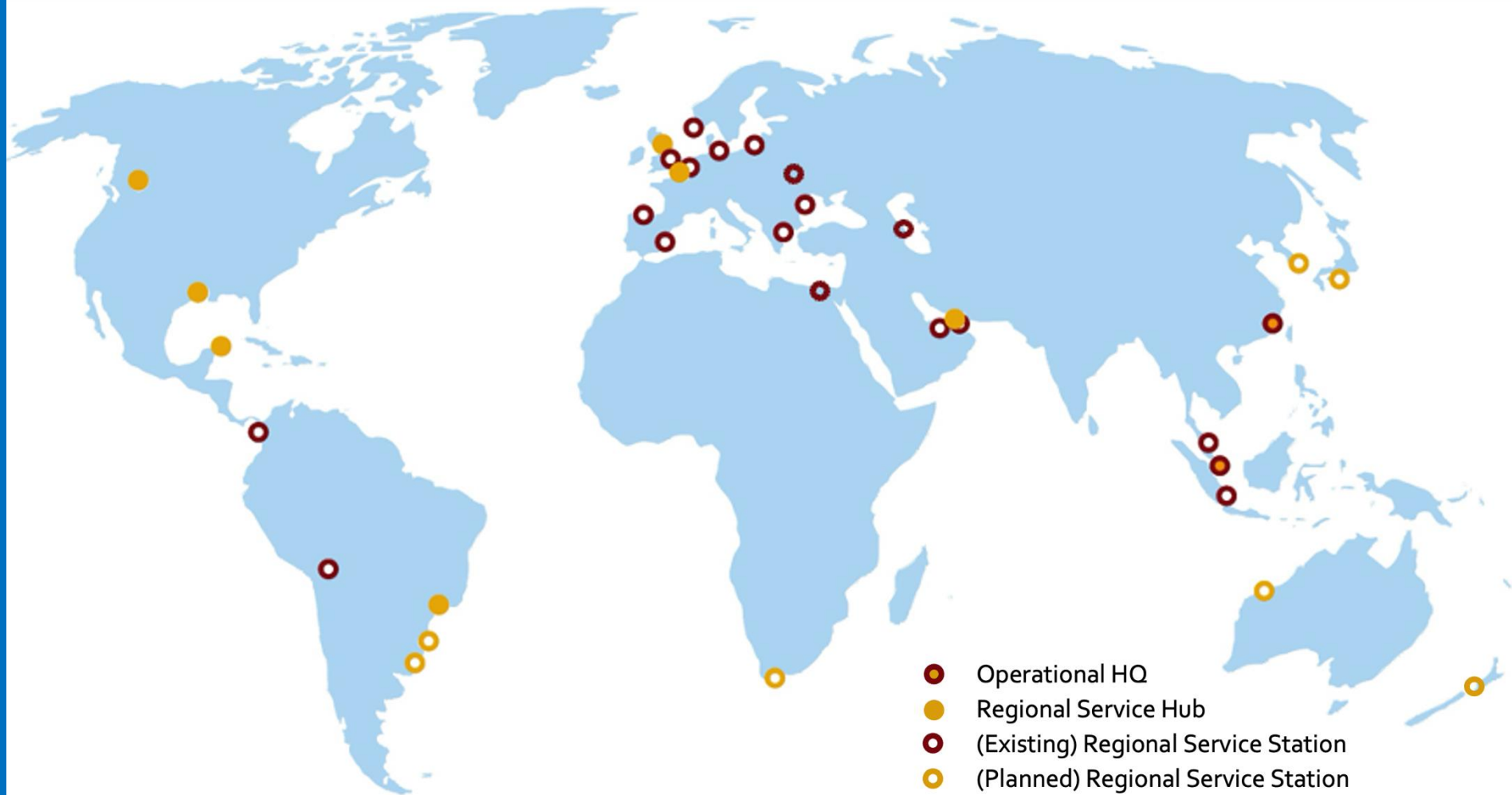
The vessel provides a modern and comfortable living and working environment, designed to meet the highest international standards and meets DNV Comfort Class 2 requirements.

Accommodation areas include well-appointed single and double cabins equipped with private bathroom facilities, workstations and entertainment systems, ensuring comfort and privacy for all personnel.

Dedicated office spaces and a fully equipped conference room are available for client and project teams, offering seamless connectivity and modern amenities to support offshore operations.

Crew welfare is further enhanced through spacious recreational areas, including a fitness room and a cinema/recreation lounge, creating a pleasant and relaxing atmosphere on board.





With our own offices in the Netherlands, UK, USA, Canada, Mexico, Brazil, the UAE and Singapore as service hubs, supported by experienced global service partners, we are fully committed to delivering premium services to our valuable customers anywhere, anytime.



<https://www.cm-energy.com/>